



Hello & Welcome

Following 5+ years of engaging local communities, Grosvenor Square is being transformed into a world class green space with groundbreaking environmental credentials.

The fourth redesign of the square in its c.300-year history is the largest private investment in public green space in London's West End in a generation.

Engagement with neighbours and other London communities has been at the heart of this redesign and will continue to be so throughout its delivery. So, ahead of works starting in June 2025, we are pleased to introduce you to the team who will be leading this exciting transformation.

This exhibition is split into 7 sections that give more detail on the approach to deliver this project.

Transforming Grosvenor Square

Journey so far

Meet the team

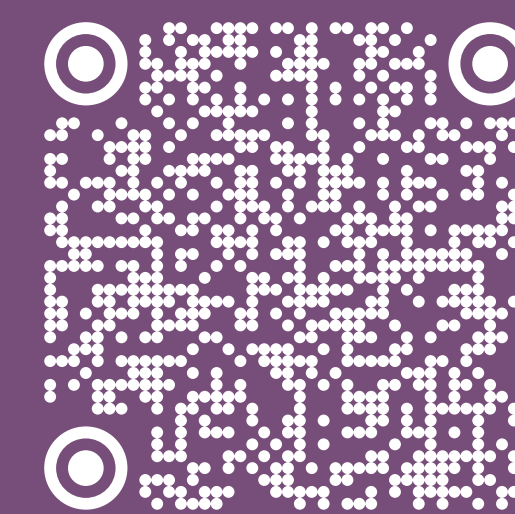
Site plan

Nearby green spaces

Works overview and timeline

Keeping neighbours informed

We're interested in learning what you thought of the information shared today, and if there's anything else you'd find useful to understand more about going forward – please share any feedback by scanning the QR code, at bit.ly/GrosvenorSquareFeedback or speak to a member of the team.



Transforming Grosvenor Square



A green oasis for Mayfair, providing residents and visitors with a calm place to relax and connect with nature



A rich variety of plant life, with over 67,000 new plants and 63 species, over 82,000 new bulbs, and 44 new trees being planted



Reinstated and enhanced heritage features to celebrate the rich history



Public art plinths to bring greater cultural variety to the square



Wild flowering lawn, wetland ponds and varied habitat areas for nature to thrive



Extended opening hours made possible by high quality lighting



Drinking water fountains to reduce the need for plastic bottles



A new education building, spaces for children to play, a kiosk serving refreshments and public toilets



Enhanced security, management and maintenance with dedicated facilities for the horticultural team that will look after the garden



Space for 350+ people to sit on a variety of seating, providing a 300% increase so more people can enjoy the gardens



Improved accessibility through widened entrances, new, level paths and a new western entrance

Journey so far

Over the past 5+ years, we have worked together with Mayfair communities and people across London to shape Grosvenor Square's redesign. We hosted 50+ workshops and events, engaged 6,700+ people and gathered 3,300+ responses. We have continued to keep people involved through the Grosvenor Square Steering Group, regular features in our community newsletter and on the project website. Engagement has been at the heart of the redesign to date and will continue to be so throughout its delivery.



Community Priorities

We started the process by asking local people what was most important to them. These priorities formed the project brief and ensured the design evolved in line with local ambitions.



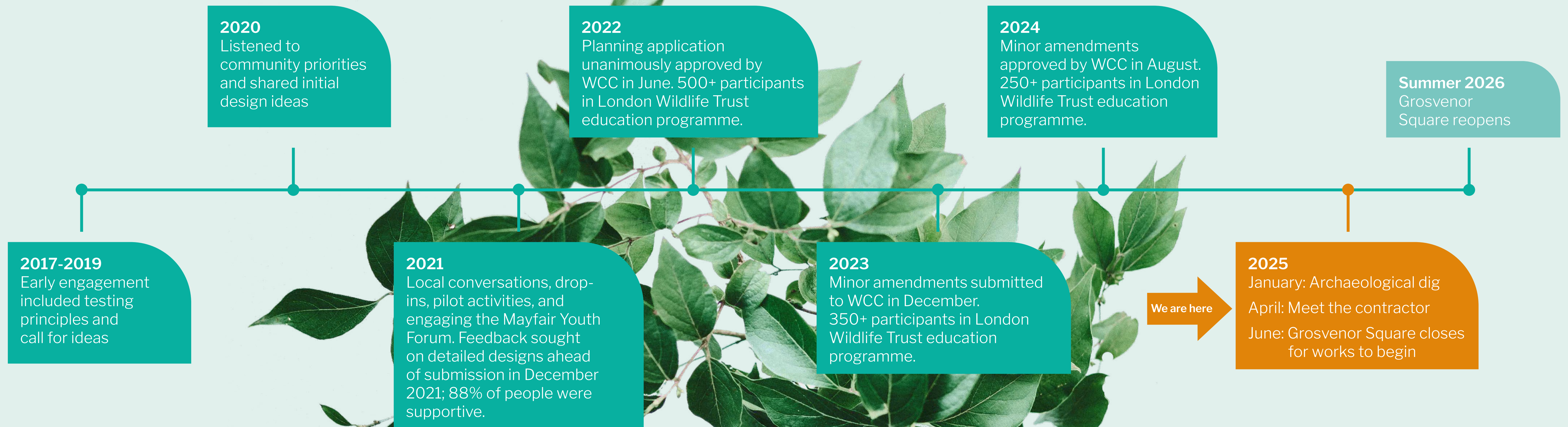
Scope of Influence

We were transparent from the outset about which design elements could be changed, compared to those determined by constraints such as policy or heritage



Seeking New Voices

Communicating through multiple channels and working with new partners allowed us to hear from more people in the Mayfair community than ever before.



Meet the team

maylim

Maylim are the main contractor that will be delivering the redesign. Maylim specialise in high quality public realm and landscaping schemes, such as Battersea Power Station and Finsbury Circus Gardens. They are currently leading on the public realm at The Chancery Rosewood at the western side of Grosvenor Square, and as such the team is familiar with working within the Mayfair area. An integrated approach enables Maylim to be agile and flexible, working closely with stakeholders, and always striving for seamless project delivery and a high quality product.



Gareth Kinsella

Project Manager

☎ 07508 017382

✉ gareth.kinsella@maylim.co.uk



James Gunn

Senior Site Manager

☎ 07572 075288

✉ james.gunn@maylim.co.uk

The project is also supported by a series of experts who include:

Design team:

Building Design Partnership (BDP), is a multidisciplinary design practice with expertise in landscape architecture, engineering, and urban planning. BDP were appointed to be Lead Designer for Grosvenor Square in 2022, taking the designs that had been shaped by Tonkin Liu forward into delivery.

Ecologist:

Gary Grant is a leading ecologist specializing in urban greening and biodiversity who has helped select plants for various areas in Grosvenor Square including the wetlands, trees and native wildflowers.

Horticulturalist:

Professor Nigel Dunnett is renowned for his innovative approaches to planting design, integrating ecology and horticulture to create sustainable, dynamic landscapes. He is known for some of the country's leading urban green projects, including the Tower of London Superbloom and the Queen Elizabeth Olympic Park.

Other specialists include **TMA** who have been advising on the approach to new and existing trees, and **Tim O'Hare Associates** who are experts in soil science and landscape engineering.

Grosvenor's Landscape and Management team:

The GLM team are responsible for maintaining and enhancing the landscapes within Grosvenor's managed spaces. They have received significant recognition for their work, including winning Best London Garden Square for Belgrave Square several years running.







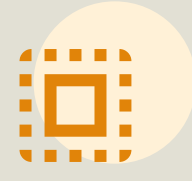
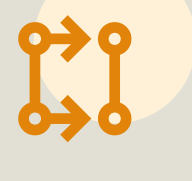

Overview of works

We will be starting on site in June 2025 and are expecting to complete the works and reopen Grosvenor Square in summer 2026.








We had previously advised that works could take between 18 months or up to 2-years to complete. However, we have worked closely with Maylim to expedite the programme wherever possible. The redesign will be delivered in one phase and whilst this will require us to temporarily close the square, it will also enable us to reopen it sooner.



The first few months will include:

-  Setting up the site, installing Heras Fencing around the perimeter behind the retained holly hedge
-  Commencing the restoration of the FDR statue and fountains
-  Decompacting the soil to improve its drainage and health
-  Removing existing paths
-  Screw piling beneath the new buildings in predetermined locations that avoid tree roots

Additional works taking place during the programme include:

-  Planting around 150,000 new plants and bulbs, and 44 new trees
-  Erecting the two buildings
-  Installing lighting
-  Installing new pathways
-  Creating the natural play areas
-  Widening entrances and creating a new entrance on the Western side
-  Installing benches



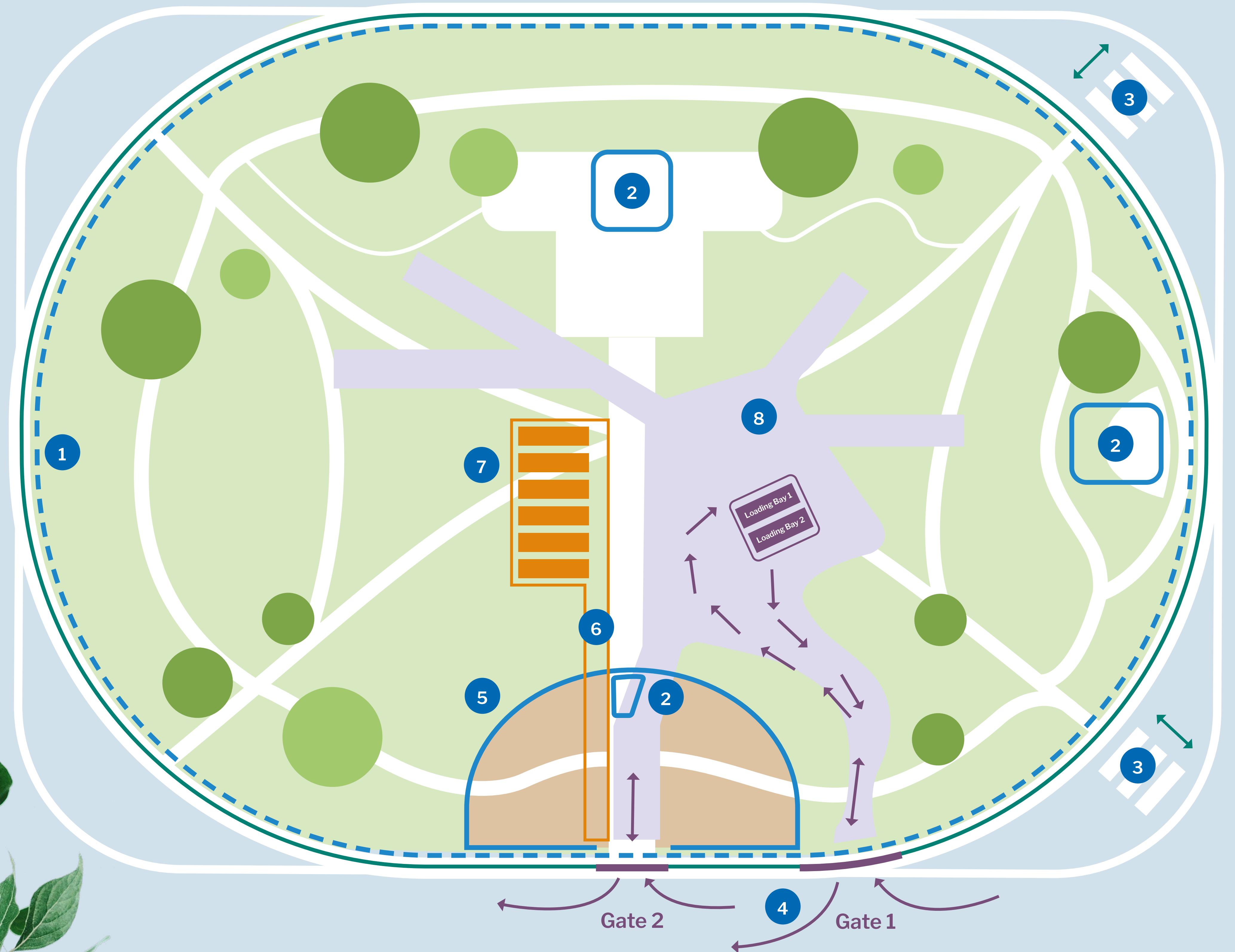
Site plan

This plan shows key site activity from June 2025 to January 2026, including site entrances, hoarding arrangement, and welfare location.

Activity on site and the site set up will evolve during the project; any significant revisions will be shared on the website and communicated via contractor newsletters.

During the first week, the Maylim team will need a single cabin located on the highway to enable them to set up Gate 1, the welfare cabins and the temporary surface.

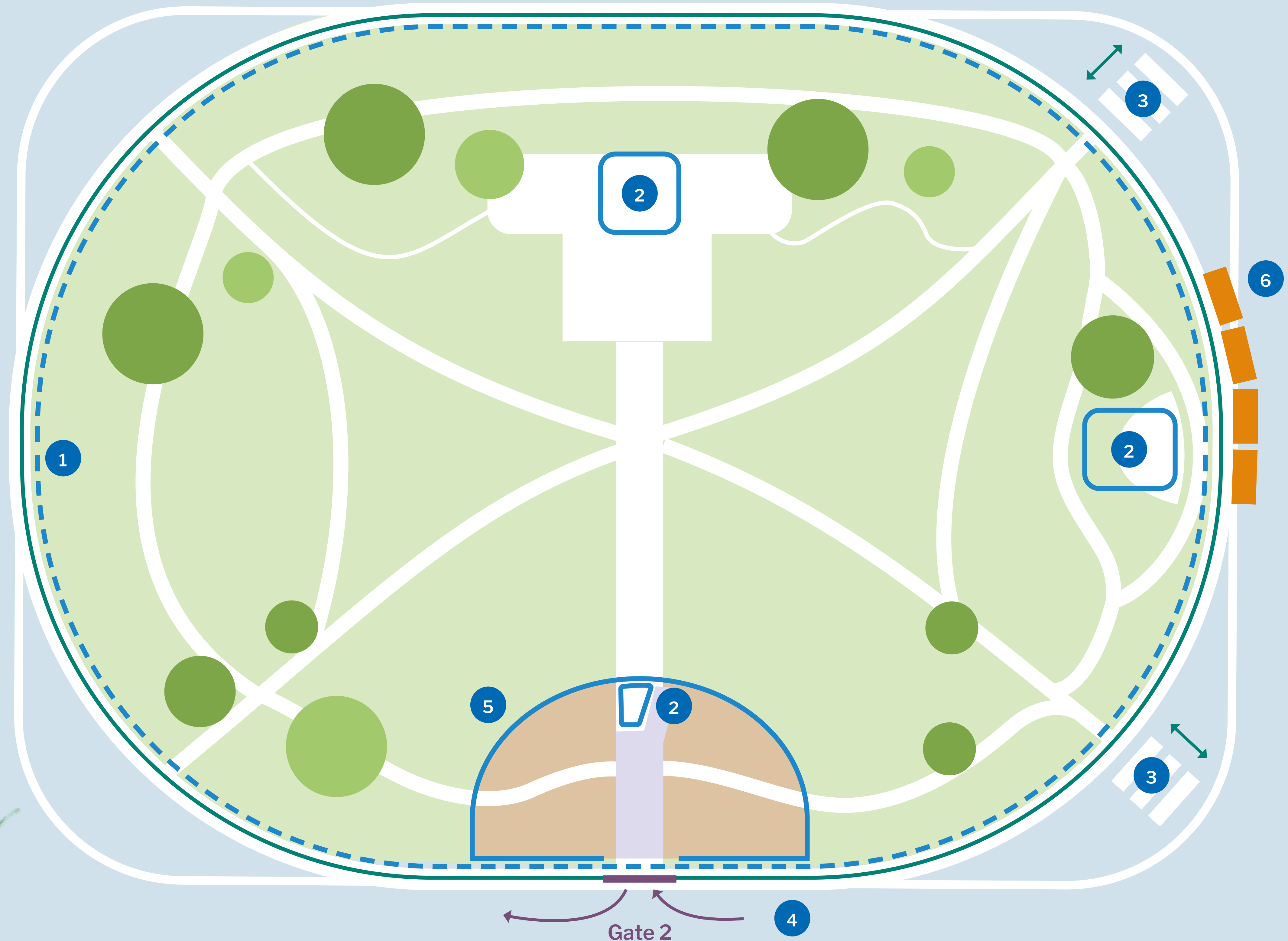
- 1** --- Square perimeter and access points secured using Heras fencing
- 2** — Eagle Squadron, Franklin D Roosevelt and 9/11 Memorials protected by hoarding
- 3** — Pedestrian route and crossings maintained
- 4** → Site vehicle access and exit routes
- 5** — Solid hoarding to building construction area
- 6** — Trackway to building construction area
- 7** — Welfare cabins
- 8** — Temporary surface for vehicle routes and storage area



Site plan

This plan shows key site activity from January 2026 until project completion, including site entrances, hoarding arrangement, and welfare location.

- 1** --- Square perimeter and access points secured using Heras fencing
- 2** — Eagle Squadron, Franklin D Roosevelt and 9/11 Memorials protected by hoarding
- 3** — Pedestrian route and crossings maintained
- 4** → Site vehicle access and exit routes
- 5** — Solid hoarding to building construction area
- 6** — Welfare cabins

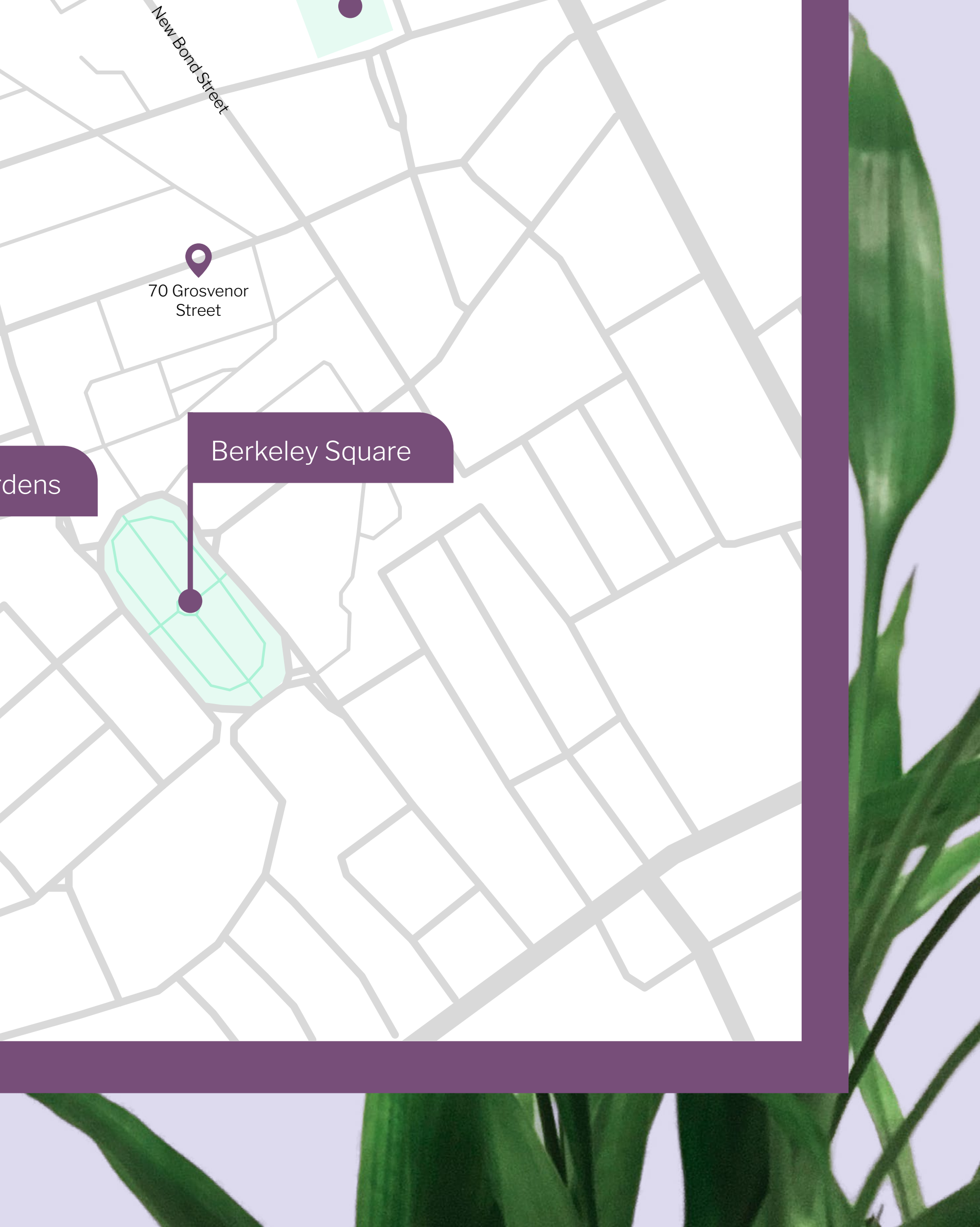
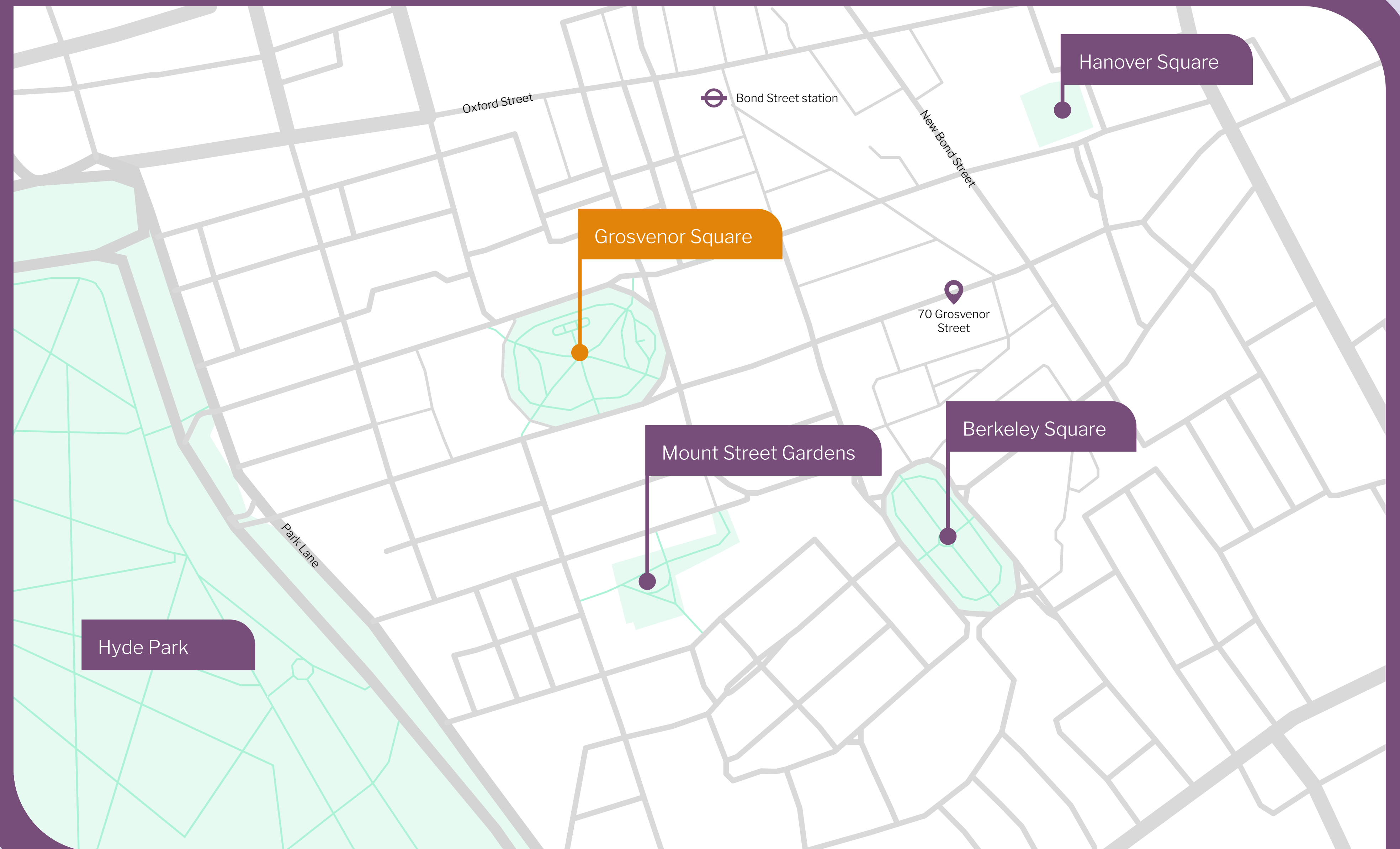


Nearby green spaces

Grosvenor Square will be closed to allow the works to take place most quickly and efficiently but there are several green spaces within walking distance.



| | Distance from Grosvenor Square (miles / minutes) |
|----------------------|--|
| Mount Street Gardens | 0.2 / 4 minutes |
| Berkeley Square | 0.3 / 7 minutes |
| Hyde Park | 0.3 / 7 minutes |
| Hanover Square | 0.4 / 9 minutes |



Steps to minimise construction impact



Working hours in line with Westminster City Council guidance: 8am – 6pm Monday – Friday and 8am – 1pm on Saturdays. No works on Sundays



Equipment used to minimise and monitor noise and vibration with maximum limits set by WCC



Ensuring site access gates and construction vehicle routes are easily identifiable with clear signage



Deliveries and construction traffic carefully managed by a Maylim logistics team and booking system for deliveries



Full height herras fencing around the site perimeter (behind the holly hedge) and secure gates at access points



Welfare provided in dedicated cabins to ensure construction workers have suitable facilities



A temporary access route on the Southern side to ensure delivery vehicles can safely enter and exit the garden in forward gear



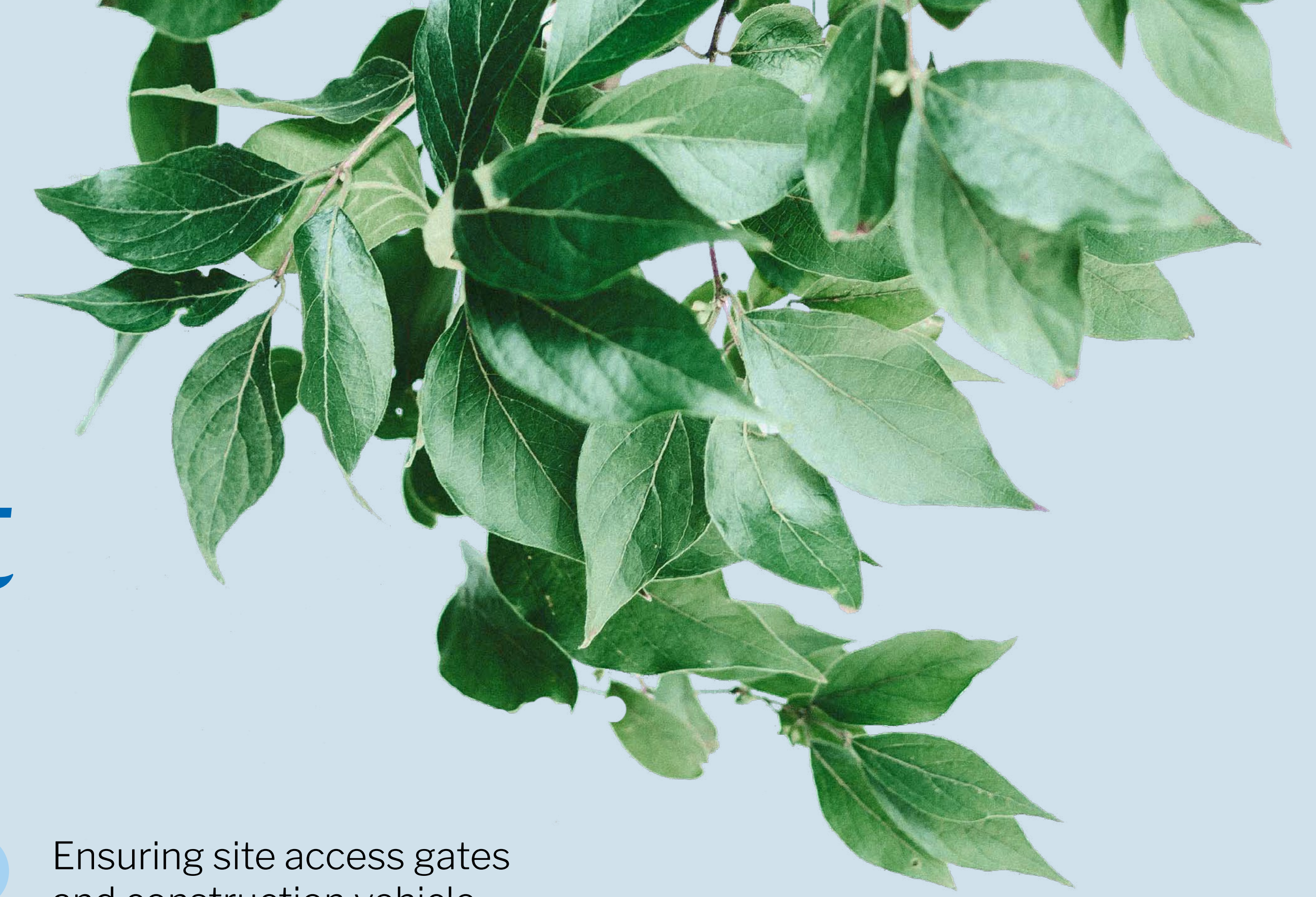
Considerate Contractor Scheme will be followed and construction personnel actively managed



Keeping the area and surrounding roads clean and tidy



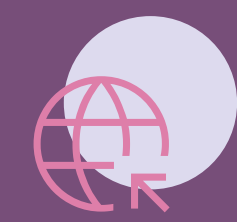
A carefully sequenced programme to minimise time on site



Keeping neighbours informed



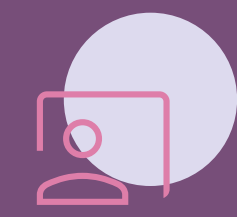
We are committed to keeping neighbours updated throughout construction and will maintain this dialogue through:



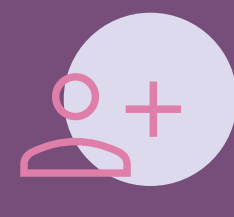
Dedicated project website with the latest information



Monthly contractor newsletter



Monthly Contractor Liaison Group meetings on Teams



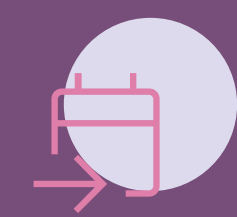
Grosvenor Square Garden Steering Group



Noticeboard at the site entrances

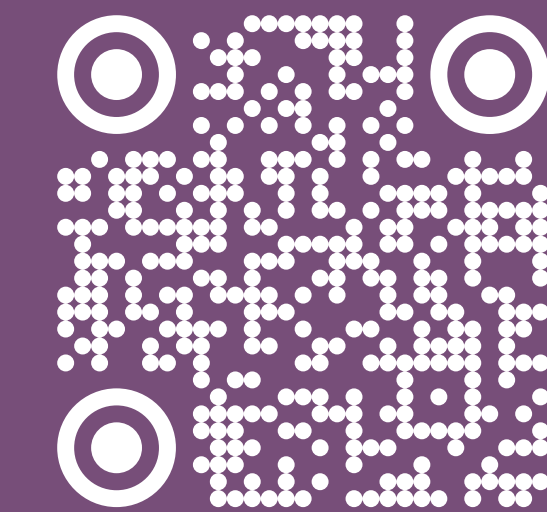


Site team accessible by phone and email



In-person events at relevant milestones to see progress

To sign up to our newsletter please visit:
bit.ly/GrSqNewsletter



Gareth Kinsella
Project Manager

☎ 07508 017382

✉ gareth.kinsella@maylim.co.uk

James Gunn
Senior Site Manager

☎ 07572 075288

✉ james.gunn@maylim.co.uk





CGI of one of the dedicated, natural play areas on the Western side of the garden



CGI of the central oval wild flowering lawn, natural stone path, new benches and woodland garden looking West



CGI of the North Eastern
entrance approach