

Accessing the outdoors

Where is your nearest green space? How do you get there, and how do you travel through it?

Great spaces need to be easy to get to and safe for everybody to move around. We're trying to find out the routes and adventures you like to take through your local green space - where you start, where you finish and what you like to see and do along the way!

With this discovery pack you will design a journey through our green space map, and then try out your route in your local park, square or garden!

Don't forget to share your designs and adventures by emailing them or sharing on social media.

Keep an eye out for the camera icon in your pack. If you spot it, take a snap of your creations and share with us!



@grosvenorsquare



@grosvenorsq



grosvenor.square@grosvenor.com

#DiscoverGrosvenorSq



Colour
me in!



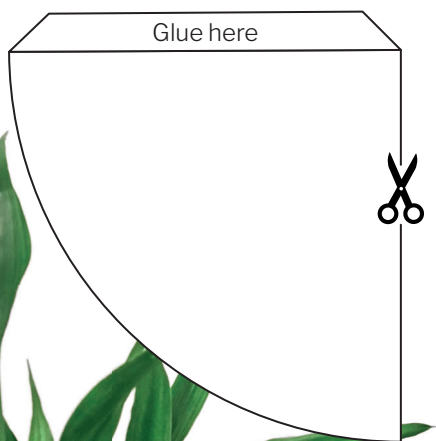
Getting from A to B



We want to know how you would explore and experience green spaces. Where would you arrive? What would you go and see? What journey would you take?

Use the template below to make a collection of cones - you can make them out of coloured paper, magazines, or even your own drawings! Just make sure you can tell them apart.

Once you've cut and stuck your cones together, head over to page 3 to find out what to do next!



How to make your cones:

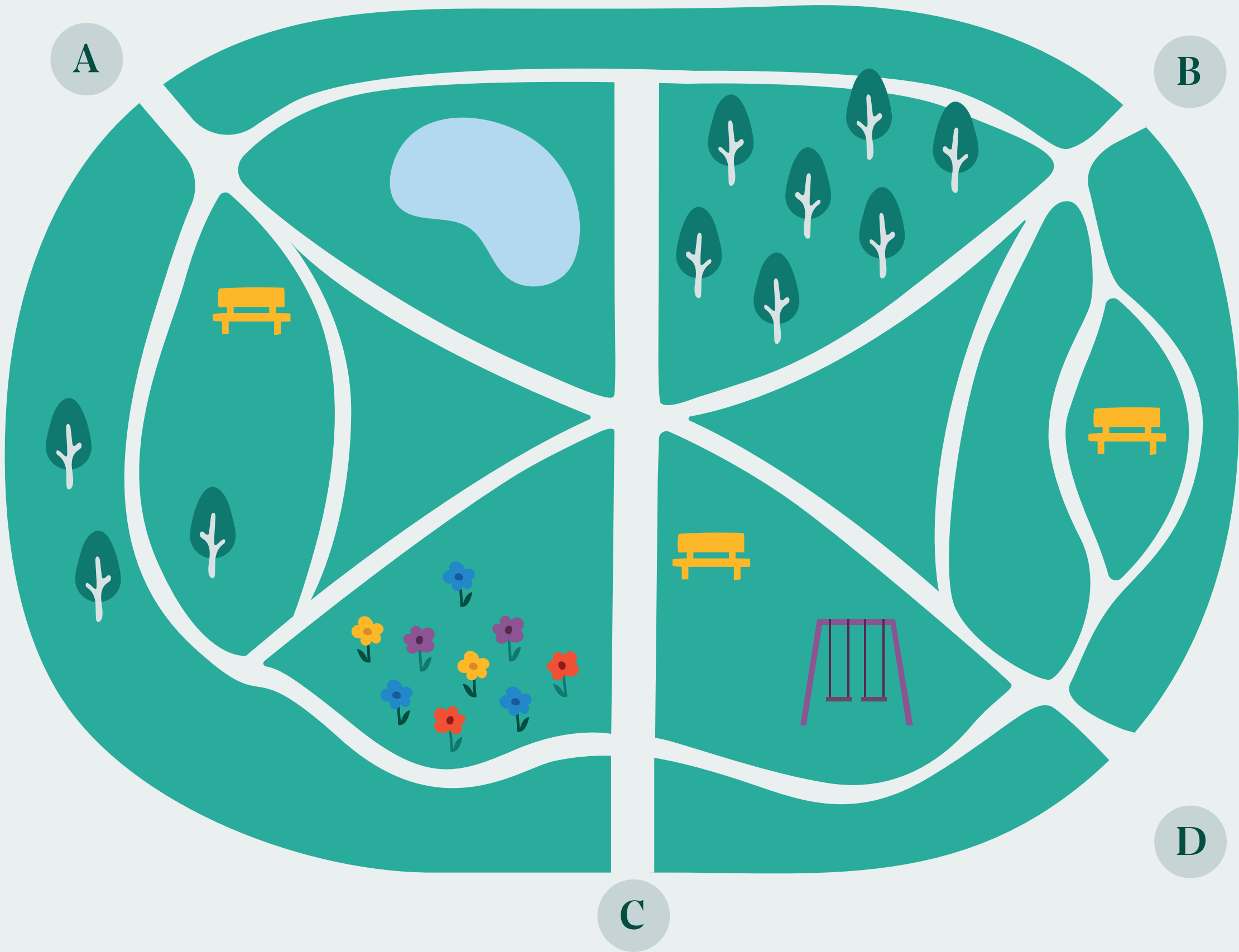
1. Cut out the template
2. Find a colourful magazine, coloured paper or draw your own pattern
3. Place the template on your chosen colourful page, draw around it and cut it out
4. Fold down the tab and add glue to it
5. Bring the glue tab around to the other side of the cone and stick down
6. Repeat with all of your cone designs (make sure you have at least 4!)

Getting from A to B



Imagine that this is your local green space, it could be a park, a garden or even just a little patch of grass on your street!
How did you get there? Which entrance did you use and what are the different routes that you might take to play and explore? Use your cones to map out how you move through this green space!

Pick two letters (e.g. A and B) and think about how you might travel from one to the other. Map out your route with a start and finish cone, and find your way through the green space, marking all your stops on the way with your different cones.



Key

You can make your cones out of anything - colourful paper, magazine cuttings, your own drawings - just make sure you can easily tell them apart.

To help you remember which is which, fill in the key below:

-  **Start**
 -  **Finish**
 -  **Something nice to see**
 -  **Somewhere to play**
 -  **Someone to meet**
 -  **The edge of the park**
 -  **Somewhere to sit**
-  **Fill in the circles with your colourful paper to match your cones!**

Share your adventure

Now you've planned your green space adventure, it's time to try it out in your local park, square or gardens!

Take these cards along for the journey and snap a picture with them every time you reach a start, pause or finish point! Don't forget to share your pics with **#DiscoverGrosvenorSq**





Something
nice to see



GROSVENOR



Somewhere to sit



GROSVENOR



Start



GROSVENOR



Finish



GROSVENOR



Somewhere to play



GROSVENOR



Someone to meet



GROSVENOR



The edge of the park



GROSVENOR